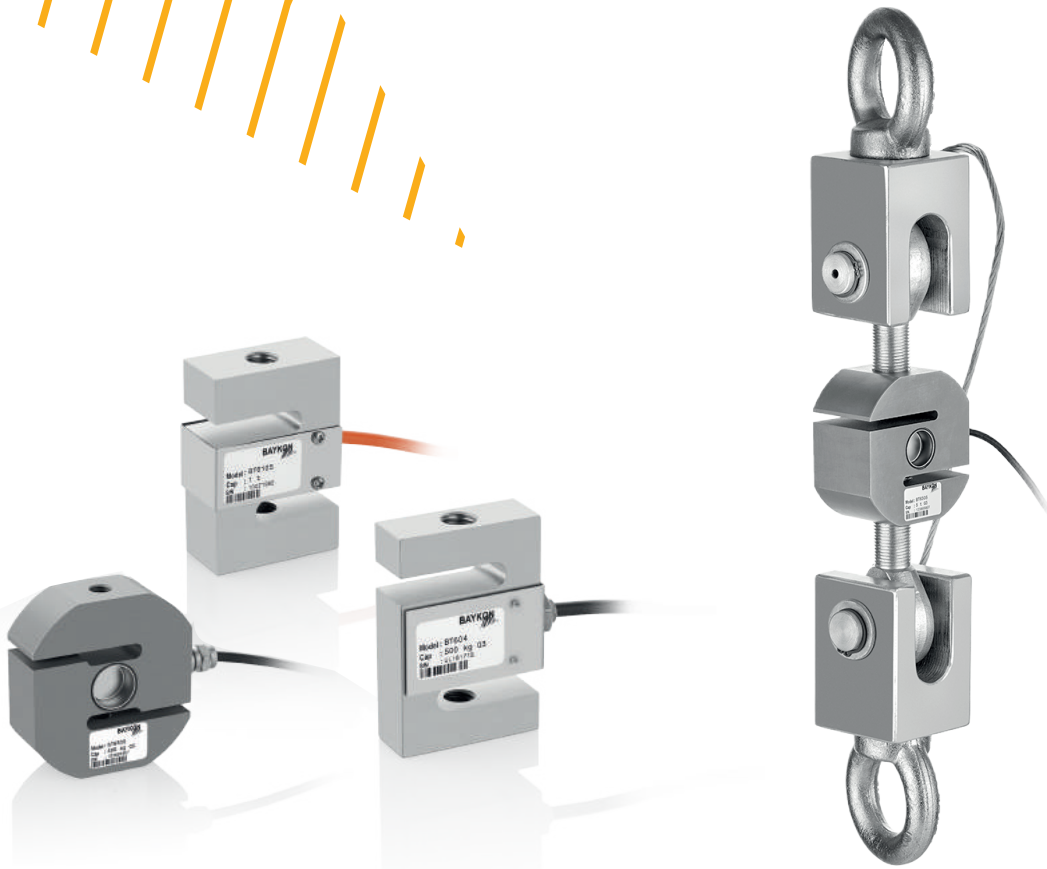


LA54-03 Weigh Module

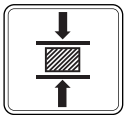
For Tension Types



Applications



Suspended Vessel



Testing Machines



Crane Scales



Industrial Processes

Key Features

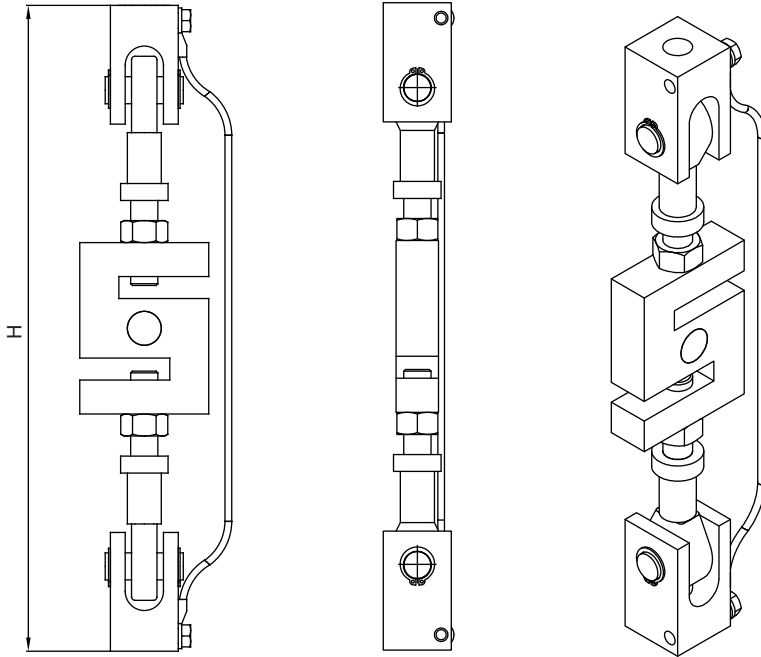
- Capacity: 100kg - 5 t
- Designed for S type load cells
- Easy to install and maintain
- Grounding cable with low resistance
- Standard galvanized steel
- Stainless steel option

LA54-03 montage kit is designed for S type tension load cells. It provides excellent performance and accuracy for suspended tank and hoppers.

It is equipped with a pair of clevis and rod assemblies that provides easy installation in a variety of industrial weighing application and correct load alignment. The grounding cable connects the two clevis assemblies to protect the load cell from electrical currents.

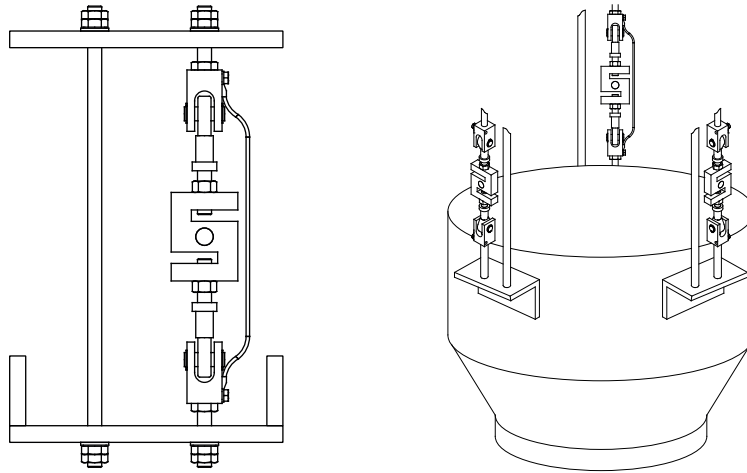
Technical Specifications

Dimensions (mm)



| Model | Load cell | Capacity | H (mm) |
|-------------|-----------|-------------|--------|
| LA54-03 - A | BT610S | 0.1 - 0.5 t | 235 |
| LA54-03 - B | BT604 | 0.2 - 1 t | 235 |
| | | 2 - 5 t | 310 |
| LA54-03 - C | BT630S | 0.5 - 1 t | 250 |
| | | 2 - 3 t | 300 |
| | | 5 t | 330 |

Application



Load cells compatible with the kit

| Compatible Load Cell Types | |
|----------------------------|-----------------------------|
| Brand | Model |
| Baykon | BT604, BT610S, BT630S |
| Flintec | ULB, UB1, UB6 |
| Vishay | 614 / 615 / 616 / 619 / 620 |