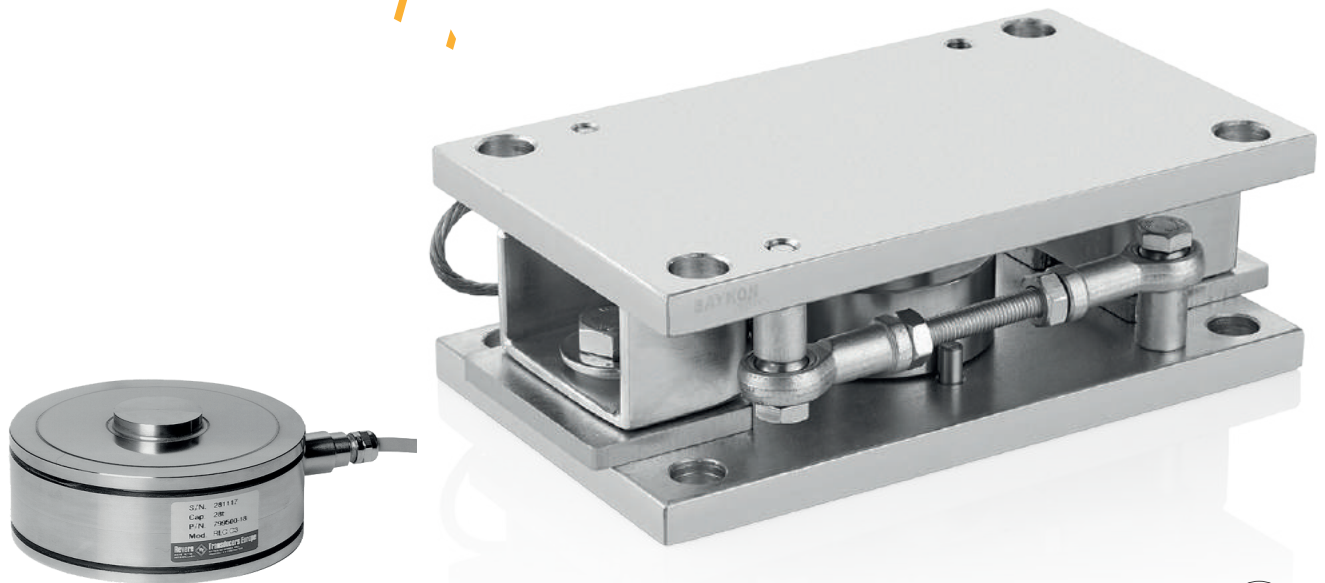


LARLC Weigh Module

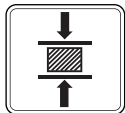
For Compression Type Load Cells



Applications



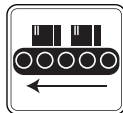
Tank & Silo



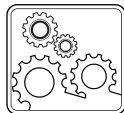
Testing Machines



Floor Scales



Conveyor Scales



Industrial Processes

Key Features

- Capacities: 2t / 3,5t / 5t / 10t / 28t
- Easy to install and maintain
- Lift-off protection for extra safety
- Built-in lateral movement control
- Easy load cell replacement after installation
- Up to two optional stabilizers
- Standard galvanized steel
- Optional stainless steel

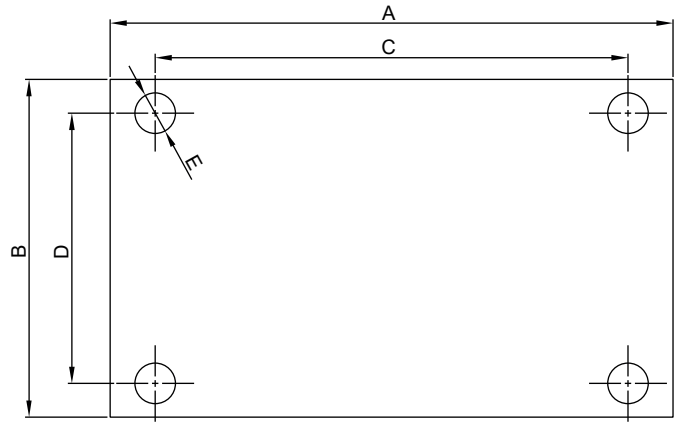
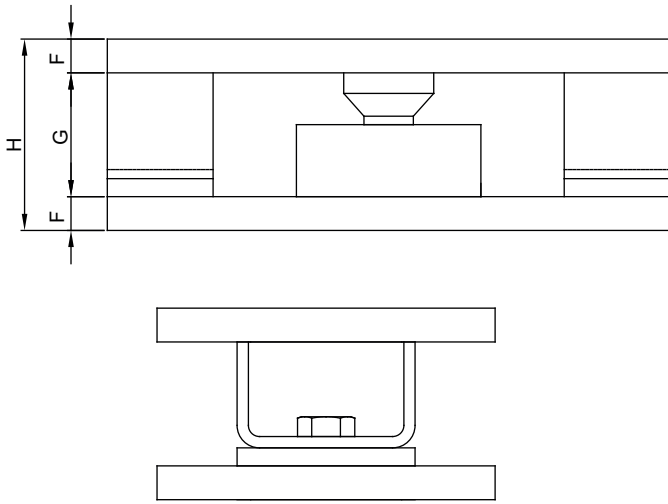
BAYKON LARLC weigh module is designed for Vishay RLC type load cells up to 28t capacity. Their typical features are low profile design, balanced load transfer, built-in lateral movement control and integrated lift-off protection.

Up to two optional stabilizers can be added to each weigh module to stabilize a scale subject to swinging, rotational torque or for in-motion weighing. LARLC offers perfect solution especially to use in mixer liquid tanks, high capacity conveyor and silo scale.

BAYKON
Industrial Weighing Systems

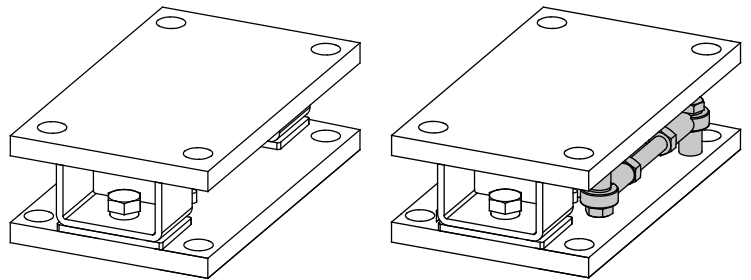
Technical Specifications

Dimensions (mm)



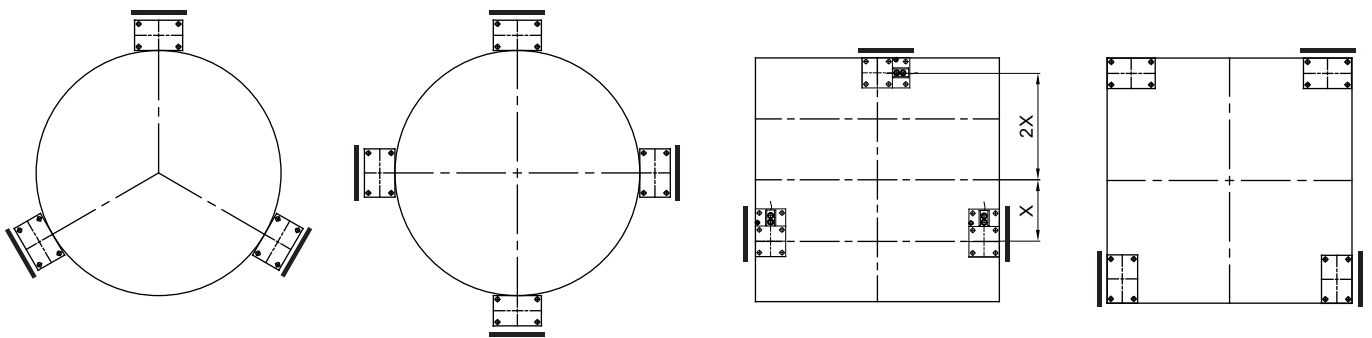
LARLC Mounting Kit

Cap. (t)	A	B	C	D	E	F	G	H
0.25 - 1 t	250	150	210	120	∅18	15	55	85
2 - 10 t	250	150	210	120	∅18	15	55	85
28 t	250	160	210	120	∅18	20	68	108



WS (With Stabilizer Option)

Application



— : WS (With Stabilizer Option)

(Specifications are subject to change without notice. 01 - 12 / 2019)