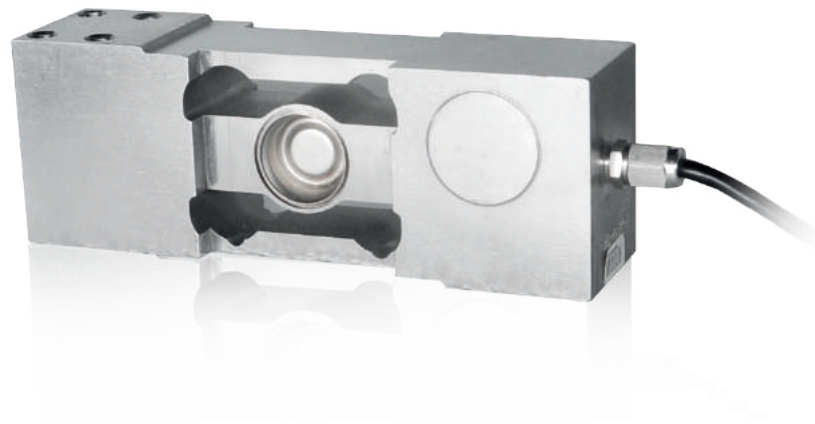
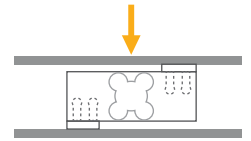


LP263SW

Single Point Load Cell



Applications



Small Bench



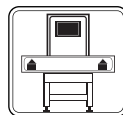
Large Bench



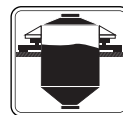
Water Proof Scales



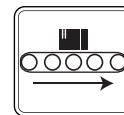
Explosive Atmospheres



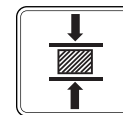
Checkweighers



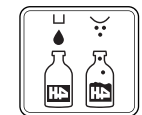
Tank, Bunker, Silo Weighing



Conveyor Scales



Testing Machines



Packing & Filling Applications


Key Features

- Capacities: 250~1250 kg
- Stainless steel
- EU OIML R60 C3 approval
- ATEX approved (optional)
Zone 0, 1, 2, 20, 21, 22
- Protection class: IP68
- Platform size (recommended): 600 x 600 mm

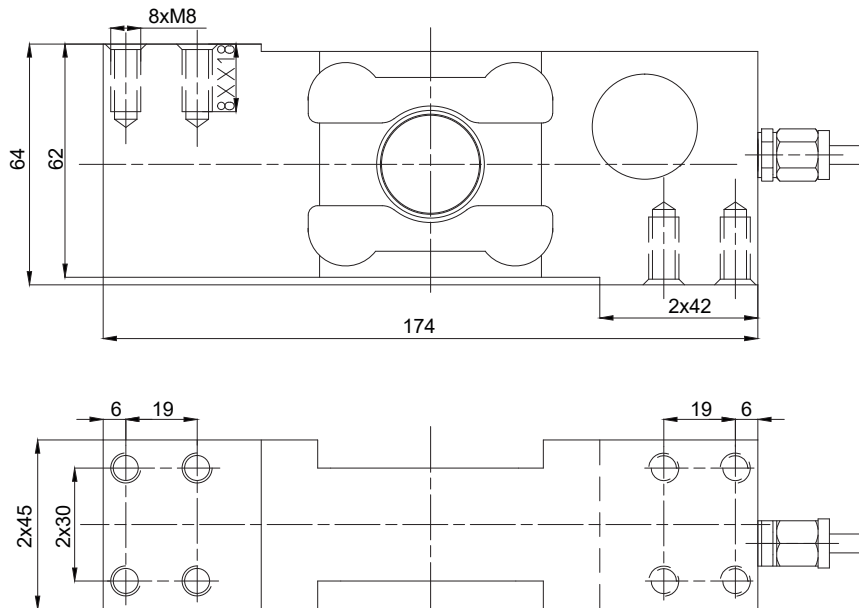
LP263SW is EU OIML R60 C3 approved stainless steel construction and hermetically welding sealed single point type load cell with IP68 protection. It is suitable for bench scale, counting scale, packing machines and similar electronic weighing devices or testing machines.

ATEX approved LP263SW load cell is suitable for use in explosive environments.

Technical Specifications

Model		LP263SW
Capacity (E_{max})	kg	250 / 300 / 500 / 750 / 800 / 1000 / 1250
Accuracy class according to OIML R60		C3
Rated output (RO)	mV / V	2.0 ± 0.2
Max. number of load cell verification intervals (n_{LC})		3000
Min. load cell verification interval (v_{min})		$E_{max} / 15000$
Min. dead load output return ($\frac{1}{2} E_{max} / Z$)		$\frac{1}{2} E_{max} / 3000$
Combined error	%RO	≤ 0.016
Minimum dead load	% E_{max}	0
Safe load limit	% E_{max}	150
Ultimate load	% E_{max}	200
Zero balance	%RO	≤ 3.0
Excitation voltage, recommended	V (DC)	5 - 10
Excitation voltage, maximum	V (DC)	15
Input resistance	Ω	400 ± 20
Output resistance	Ω	352 ± 3
Insulation resistance (at 50 V DC)	M Ω	≥ 5000
Compensated temperature range	$^{\circ}C$	- 10...+ 40
Operating temperature range	$^{\circ}C$	- 30...+ 70
ATEX Approval (Optional)		ATEX  II 1G Ex ia IIC T6 Ga II 1D Ex ia IIC T82 $^{\circ}C$ Da
Material		Stainless steel
Protection class		IP68
Cable		Shielded, 4 conductor cable, length: 6 m / diameter: 5 mm
Maximum platform size	mm	600 x 600

Dimensions (mm)



Color Codes

Function	Colors
+ input	blue
+ output	white
- input	black
- output	red
shield	

Specifications are subject to change without notice. 02 -03 / 2024)