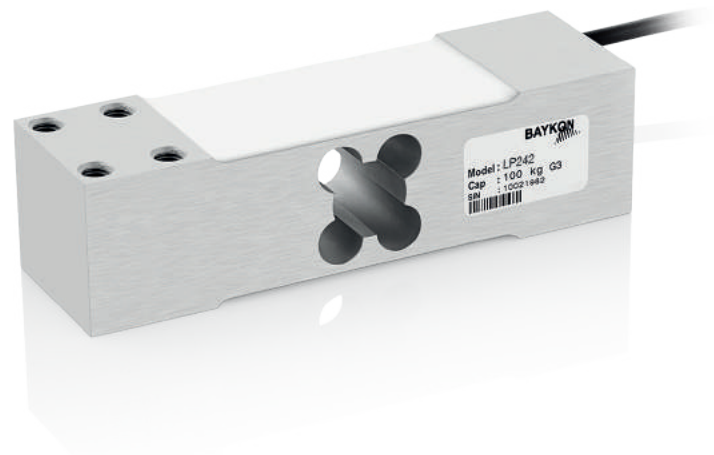
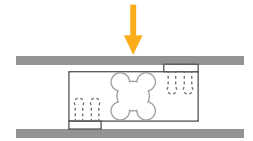


LP242

Single Point Load Cell



Applications



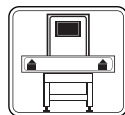
Small Bench



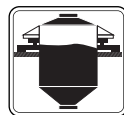
Large Bench



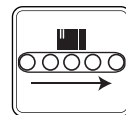
Explosive Atmospheres



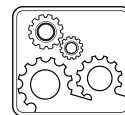
Checkweighers



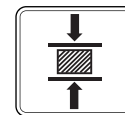
Tank, Bunker, Silo Weighing



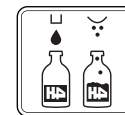
Conveyor Scales



Industrial Processes



Testing Machines



Packing & Filling Applications


Key Features

- Capacities: 50~500 kg
- Aluminum
- OIML R60 C4 approved
ATEX approved (optional)
Zone 0, 1, 2, 20, 21, 22
- Protection class: IP66
- Platform size (recommended): 500 x 500 mm

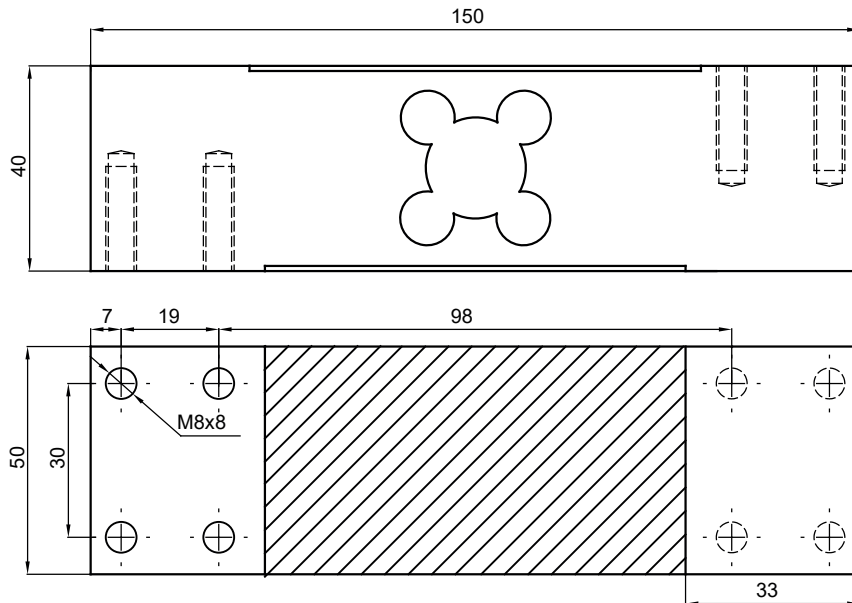
LP242 is aluminium-alloy construction and adhesive sealed single point type loadcell with IP66 protection. It is suitable for bench scale, counting scale, packing machines and similar electronic weighing devices or testing machines.

ATEX approved LP242 load cell is suitable for use in explosive environments.

Technical Specifications

Model	LP242		
Capacity (E_{max})	kg	50 / 60	100 / 150 / 200 / 250 / 300 / 400 / 500
Accuracy class according to OIML R60		Non Approved	C4
Rated output (RO)	mV / V		2.0 ± 0.2
Max. number of load cell verification intervals (n_{LC})		-	4000
Min. load cell verification interval (v_{min})			$E_{max} / 15000$
Temperature effect on zero	%RO / 10°C	≤ 0.02	≤ 0.01
Temperature effect on sensitivity	%RO / 10°C		± 0.01
Combined error	%RO	≤ 0.02	≤ 0.017
Safe load limit	% E_{max}		150
Ultimate load	% E_{max}		300
Zero balance	%RO		≤ 2.0
Creep error (30 minutes)	%RO		≤ 0.02
Excitation voltage, recommended	V (DC)		5 - 10
Excitation voltage, maximum	V (DC)		15
Input resistance	Ω		404 ± 10
Output resistance	Ω		350 ± 3
Insulation resistance (at 50 V DC)	M Ω		≥ 2000
Compensated temperature range	°C		- 10...+ 40
Operating temperature range	°C		- 20...+ 50
ATEX Approval (Optional)		ATEX 	II 1G Ex ia IIC T6 Ga II 1D Ex ia IIIC T82°C Da
Material			Aluminium
Protection class			IP66
Cable			Shielded, 4 conductor cable, length: 1.8 m / diameter: 5 mm
Maximum platform size	mm		500 x 500

Dimensions (mm)



Color Codes

Function	Colors
+ input	blue
+ output	white
- input	black
- output	red
shield	