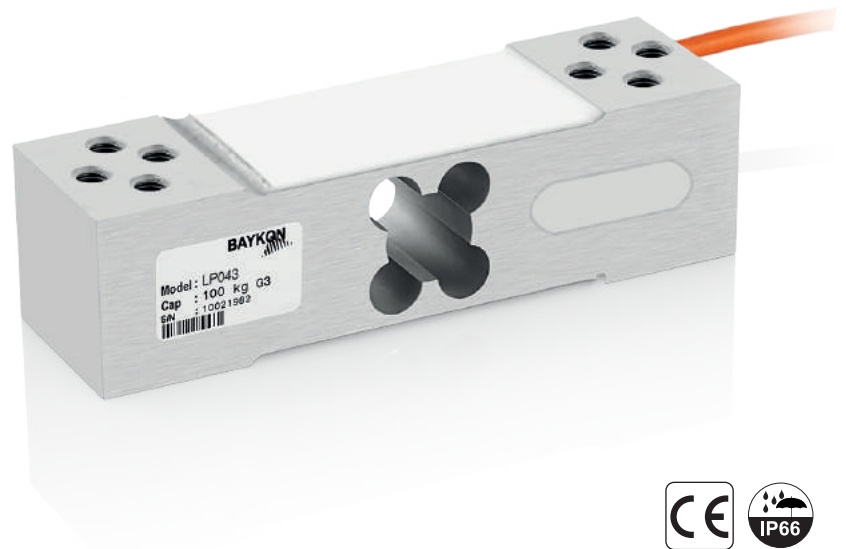
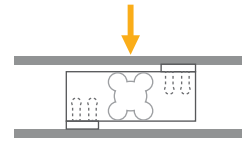


LP043

Single Point Load Cell



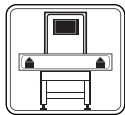
Applications



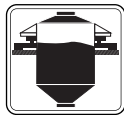
Small Bench



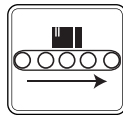
Large Bench



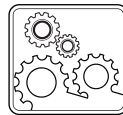
Checkweighers



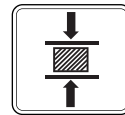
Tank, Bunker,
Silo Weighing



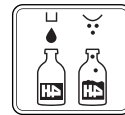
Conveyor
Scales



Industrial
Processes



Testing
Machines



Packing & Filling
Applications

Key Features

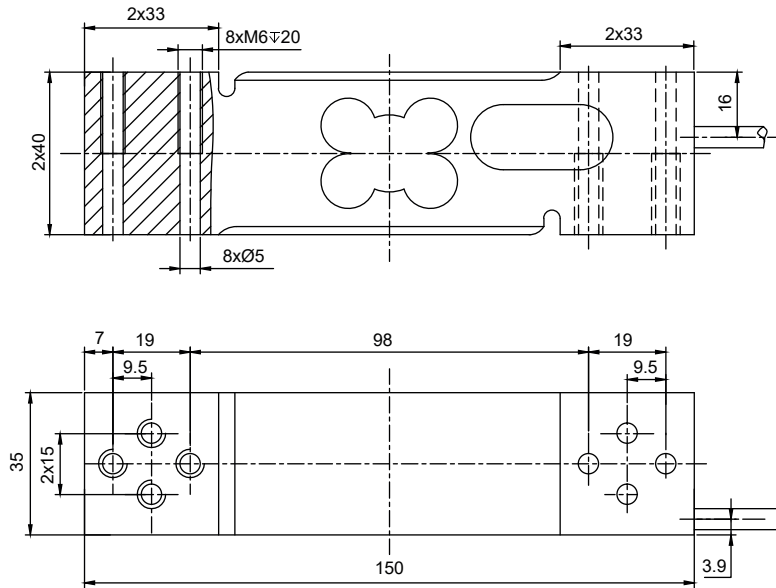
- Capacities: 15~500 kg
- Aluminium
- Protection class: IP66
- Platform size (recommended): 400 x 400 mm

LP043 is aluminium single point load cell with IP66 protection. It is suitable for bench scales, counting scales, balances, packing machines and testing devices for force measurement.

Technical Specifications

Model		LP043
Maximum Capacity (E _{max})	kg	15 / 20 / 30 / 35 / 50 / 60 / 100 / 150 / 200 / 250 / 300 / 500
Accuracy class		G3
Rated output (R0)	mV / V	2 ± 0.2
Temperature effect on zero	%R0 / °C	≤ 0.0017
Temperature effect on sensitivity	%R0 / °C	≤ 0.0012
Combined error	%R0	≤ 0.02
Zero balance	%R0	≤ ± 3
Input resistance	Ω	404 ± 15
Output resistance	Ω	350 ± 3
Insulation resistance (at 50 V DC)	MΩ	≥ 2000
Safe load limit	%E _{max}	150
Ultimate load	%E _{max}	300
Excitation voltage, recommended	V (DC)	5 - 10
Excitation voltage, maximum	V (DC)	15
Compensated temperature range	°C	- 10...+ 40
Operating temperature range	°C	- 20...+ 50
Material		Aluminium
Protection class		IP66
Cable		Length: 1.8 m / Ø 5 mm
Maximum platform size	mm	400 x 400

Dimensions (mm)



Color Codes

Function	Colors
+ excitation	blue
- excitation	black
+ signal	white
- signal	red
shield	yellow

(Specifications are subject to change without notice. 03 -03 / 2024)