

LECH Weigh Module

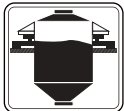
For High Capacity Ring Load Cells



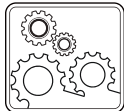
Applications



Explosive
Atmospheres



Tank, Bunker,
Silo Weighing



Industrial
Processes

Key Features

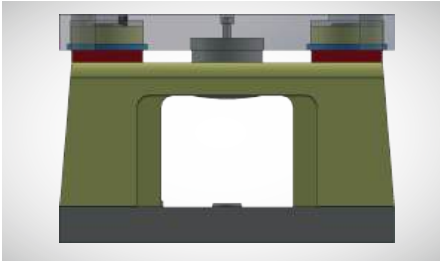
- 47-68-100-150 tons capacities,
- High weighing accuracy,
- Ability of mounting without load cell,
- Easy and practical load cell replacement,
- Integrated protection against excessive lateral forces,
- Painted, galvanized and 304/316 stainless steel models.

LECH Weigh Module is especially designed for high capacity tank and silo scales. It is used with BR110/110S ring type load cells with 47 tons, 68 tons, 100 tons and 150 tons capacity. The LECH weigh module can be installed without load cell which prevents damage risk of the load cell during assembly and welding operations. It allows very easy load cell replacement in case of a malfunction.

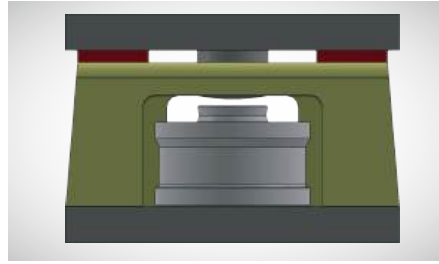
The LECH weigh module is equipped with an integrated protection device that will operate reliably against very strong lateral forces without compromising weighing accuracy. The LECH module is available in static painted, galvanized and 304/316 stainless steel.

Installation without load cell

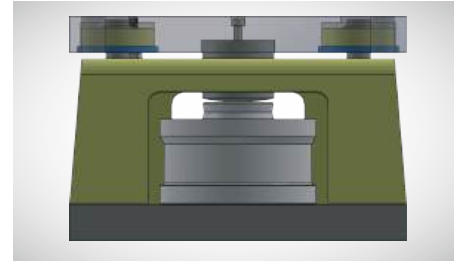
Easy load cell replacement



Module without loadcell is placed.



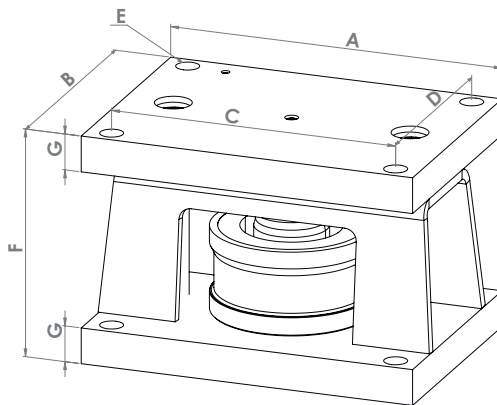
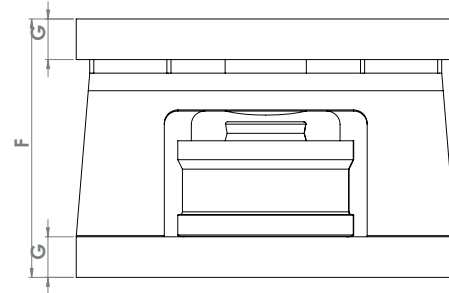
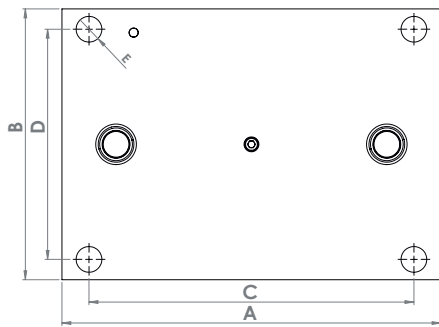
The load cell is put in place.



The support pieces are removed.

Technical Specifications

Dimensions (mm)



LECH	47-68t	100-150t
A	280	300
B	200	220
C	240	260
D	170	190
E	Ø19	Ø19
F	190 ⁺² ₋₅	206 ⁺² ₋₅
G	30	30

LECH Load cells compatible with the kit

Capacities: 47 - 68 - 100 - 150 ton	
Brand	Model
Baykon	BR110 / BR110S