

# LARLC Weigh Module

For Ring Type Load Cells



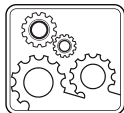
## Applications



Explosive  
Atmospheres



Tank, Bunker,  
Silo Weighing



Industrial  
Processes

## Key Features

- Capacities: 2t / 3,5t / 5t / 10t / 28t
- Easy to install and maintain
- Lift-off protection for extra safety
- Built-in lateral movement control
- Easy load cell replacement after installation
- Up to two optional stabilizers
- Standard galvanized steel
- Optional stainless steel

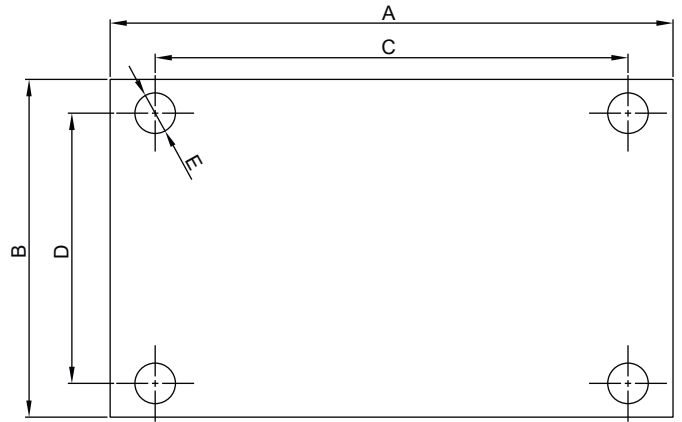
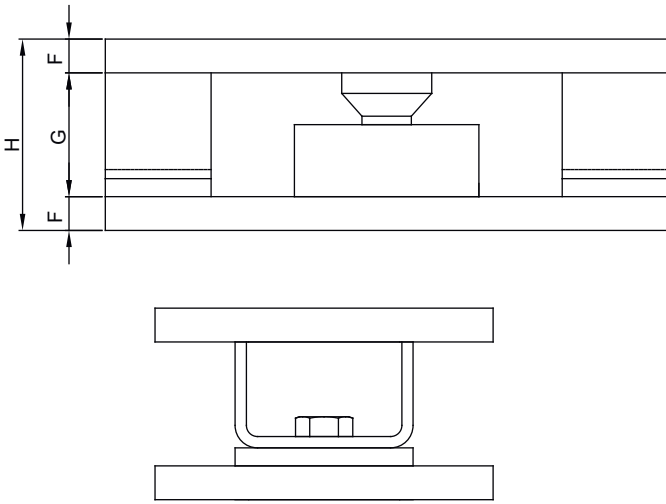
BAYKON LARLC weigh module is designed for Vishay RLC type load cells up to 28t capacity. Their typical features are low profile design, balanced load transfer, built-in lateral movement control and integrated lift-off protection.

Up to two optional stabilizers can be added to each weigh module to stabilize a scale subject to swinging, rotational torque or for in-motion weighing. LARLC offers perfect solution especially to use in mixer liquid tanks, high capacity conveyor and silo scale.

**BAYKON**  
Industrial Weighing Systems

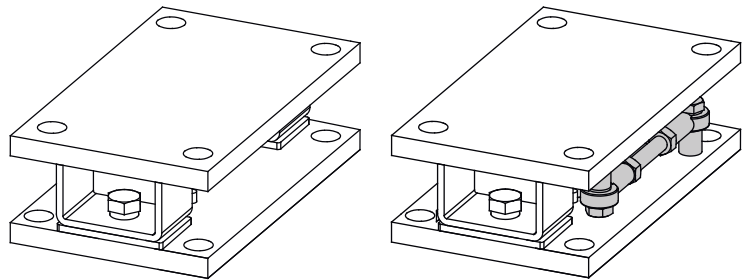
# Technical Specifications

## Dimensions (mm)



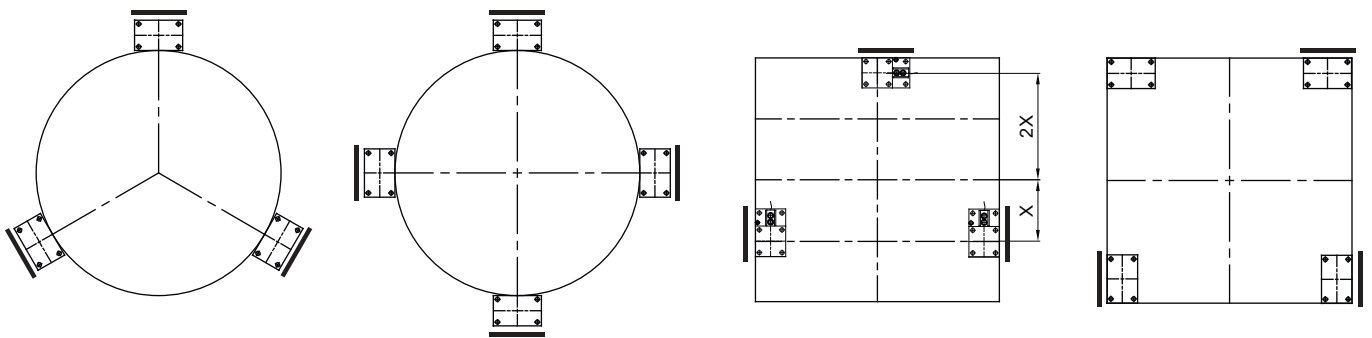
LARLC Mounting Kit

Cap. (t)	A	B	C	D	E	F	G	H
0.25 - 1 t	250	150	210	120	∅18	15	55	85
2 - 10 t	250	150	210	120	∅18	15	55	85
28 t	250	160	210	120	∅18	20	68	108



WS ( With Stabilizer Option )

## Application



— : WS ( With Stabilizer Option )

(Specifications are subject to change without notice. 01 - 03 / 2024)