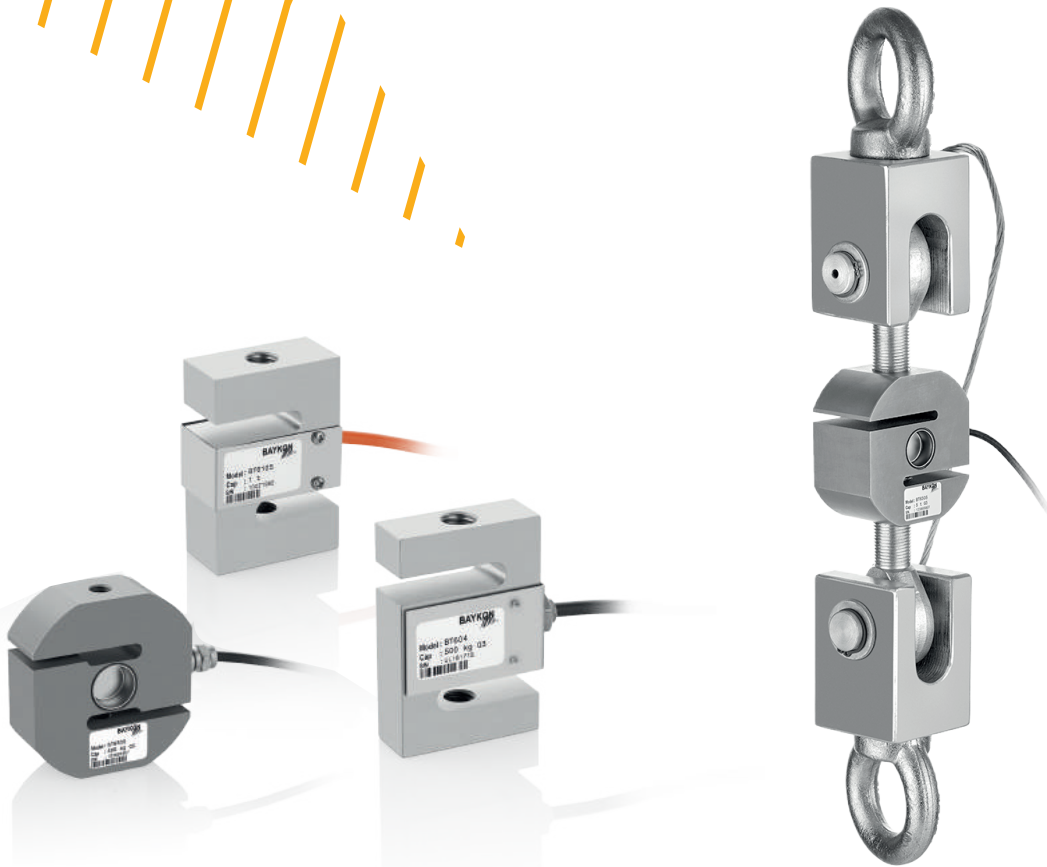


# LA54 Weigh Module

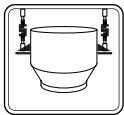
For Tension Types



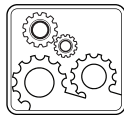
## Applications



Explosive Atmospheres



Suspended Vessel



Industrial Processes

## Key Features

- Capacity: 100 kg - 5 t
- Designed for S type load cells
- Easy to install and maintain
- Grounding cable with low resistance
- Standard galvanized steel
- Stainless steel option

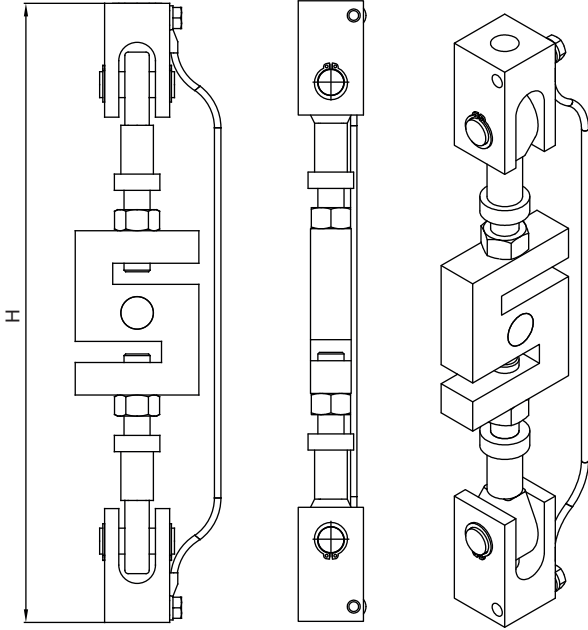
LA54 montage kit is designed for S type tension load cells. It provides excellent performance and accuracy for suspended tank and hoppers.

It is equipped with a pair of clevis and rod assemblies that provides easy installation in a variety of industrial weighing application and correct load alignment. The grounding cable connects the two clevis assemblies to protect the load cell from electrical currents.

**BAYKON**  
Industrial Weighing Systems

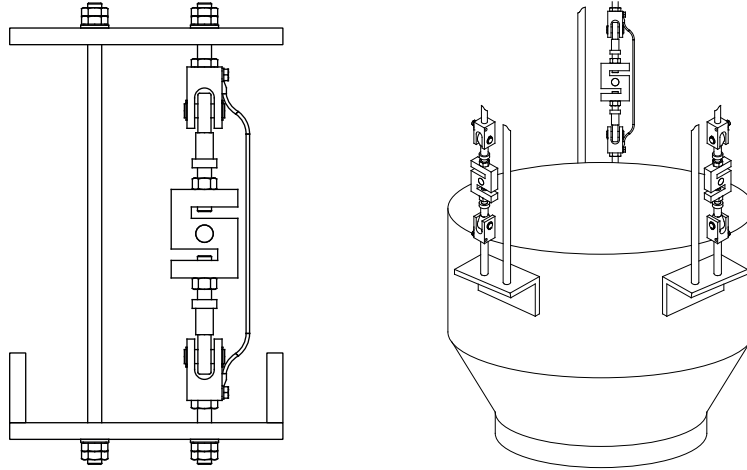
# Technical Specifications

## Dimensions (mm)



Model	Load cell	Capacity	H (mm)
LA54/M8-0.2G	BT602-BT604 BT630-BT630S	20-150 kg	202
LA54/M10-0.2G	BT604	100-150 kg	212
LA54/M12-1.5G LA54/M12-1.5S	BT602-BT604 BT630-BT630S BT610-BT610S ULB-UB1-614 615-616-620	100-1500 kg	236
LA54/M20-5G LA54/M20-5S	BT604-ULB BT610-BT610S BT630-BT630S	1-5 t	342

## Application



## Load cells compatible with the kit

Compatible Load Cell Types	
Brand	Model
Baykon	BT601, BT602, BT604, BT610S, BT630S, BT630, BT630S
Flintec	ULB, UB1, UB6
Vishay	614 / 615 / 616 / 619 / 620