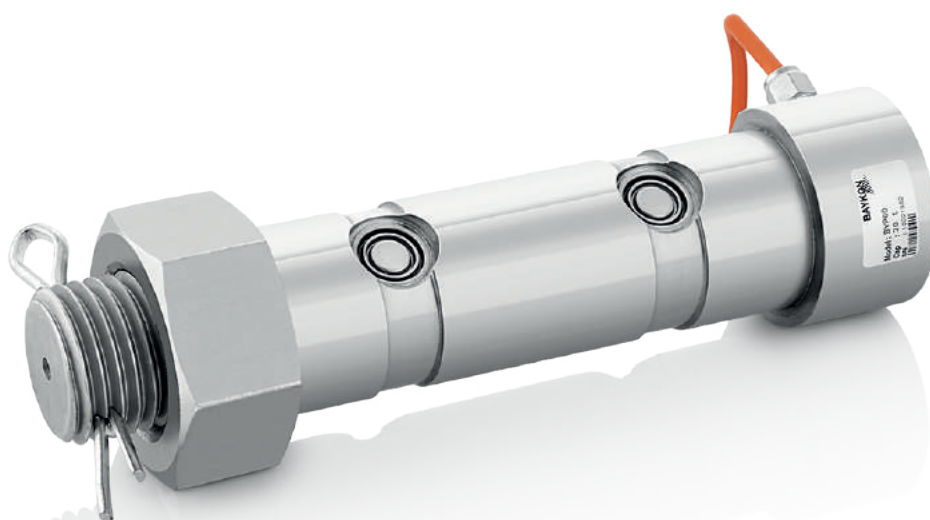
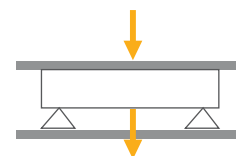


BYP60

Load Pin



Applications



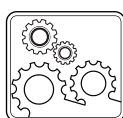
Crane Scales



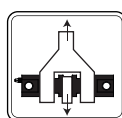
High Capacity Applications



Special Weighing



Industrial Processes



Overload Limiting

Key Features

- Capacities: 20~100 t
- Nickel plated alloy steel
- Protection class: IP67
- High accuracy

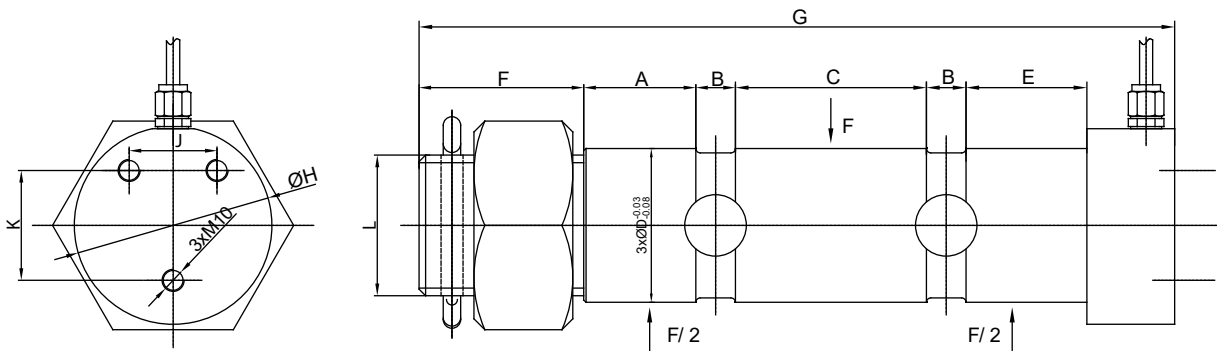
BYP60 is a high performance steel construction pin type loadcell. It is used for force measurement applications in various industries; heavy industry, mining, offshore, subsea and aerospace.

BYP60 can be incorporated easily and economically into the load path by replacing any existing load bearing pins. Typically they are used in rope sheaves, fairleads, cranes and safe limit applications.

Technical Specifications

Model		BYP60
Capacity (E_{max})	t	20 / 30 / 50 / 80 / 100
Rated output (RO)	mV / V	2.0 ± 0.01
Combined error	%RO	≤ 0.05
Temperature effect on zero	%RO / 10°C	≤ 0.05
Temperature effect on sensitivity	%RO / 10°C	≤ 0.05
Safe load limit	% E_{max}	110
Ultimate load	% E_{max}	130
Zero balance	%RO	≤ 1
Creep error (30 min.)	%RO	≤ 0.05
Excitation voltage, recommended	V (DC)	5 - 12
Excitation voltage, maximum	V (DC)	15
Input resistance	Ω	750 ± 10
Output resistance	Ω	702 ± 5
Insulation resistance (at 50 V DC)	M Ω	≥ 5000
Compensated temperature range	$^{\circ}\text{C}$	- 10...+ 40
Operating temperature range	$^{\circ}\text{C}$	- 30...+ 70
Material		Nickel plated alloy steel
Protection class		IP67
Cable		Length: 10 m / diameter: 6 mm

Dimensions (mm)



Capacity	A	B	C	D	E	F	G	H	J	K	L
20t	30	18	60	51	33	60	258	65	30	30	M42
30t	31	18	70	57	37	65	279	70	30	40	M48
50t	50	18	90	70	54	75	355	88	40	50	M56
80t	56	24	104	82.5	62	80	405	100	50	60	M64
100t	72	24	110	95.5	82	80	452	114	60	70	M64

Color Codes

Function	Colors
+ excitation	blue
- excitation	black
+ signal	white
- signal	red
shield	