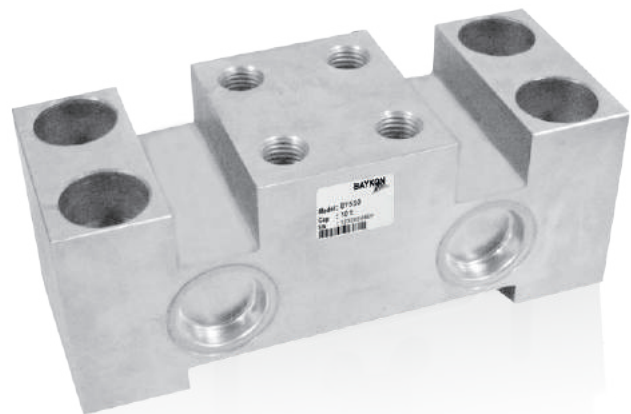
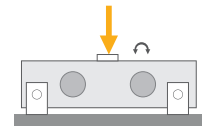


BY550

Double Ended Shear Beam Load Cell



Applications



Crane Scales



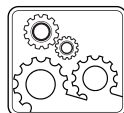
Tank, Bunker,
Silo Weighing



High Capacity
Applications



Special
Weighing



Industrial
Processes



Packing & Filling
Applications

Key Features

- Capacities: 10~50 t
- Nickel plated alloy steel
- High accuracy
- Protection class: IP67

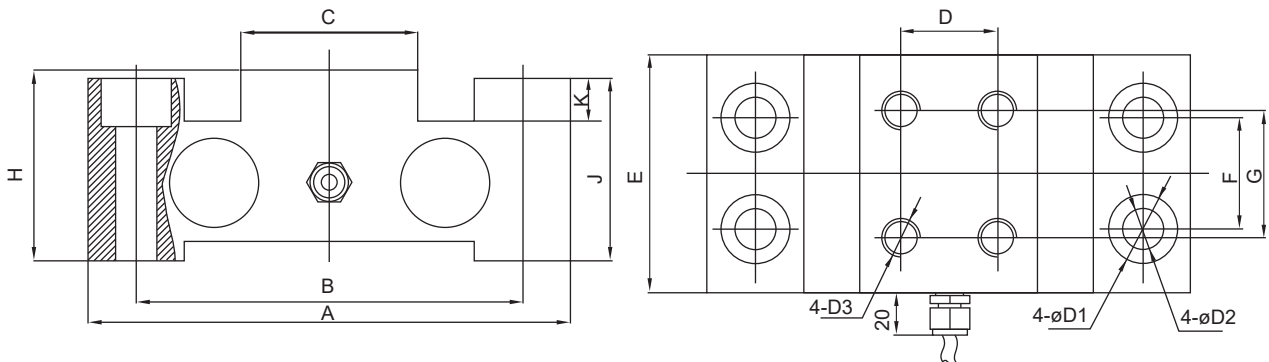
BY550 is welded, IP67 protected steel construction double ended shear beam loadcell up to 50t capacity.

It can be used safely in harsh environments like steel plants such as melting pot weighing, ship and yacht weighing, high capacity industrial weighing processes and special weighing systems.

Technical Specifications

Model	BY550				
Capacity (E _{max})	t	10	20	30	40-50
Rated output (R0)	mV / V	1.8 ± 0.005	2.0 ± 0.005	1.2 ± 0.005	1.8 ± 0.005
Combined error	%R0	≤ 0.2			
Temperature effect on zero	%R0 / 10°C	≤ 0.03			
Temperature effect on sensitivity	%R0 / 10°C	≤ 0.05			
Safe load limit	%E _{max}	150			
Ultimate load	%E _{max}	300			
Zero balance	%R0	≤ 1			
Creep error (30 min.)	%R0	≤ 0.03			
Excitation, recommended	V (DC)	5 - 12			
Excitation maximum	V (DC)	15			
Input resistance	Ω	750 ± 10			
Output resistance	Ω	702 ± 2			
Insulation resistance (at 50 V DC)	MΩ	≥ 5000			
Compensated temperature range	°C	- 10...+ 40			
Operating temperature range	°C	- 30...+ 70			
Material		Nickel plated alloy steel			
Protection class		IP67			
Cable		Length: 16 m / diameter: 6 mm			

Dimensions (mm)



Capacity (t)	A	B	C	D	E	F	G	H	J	K	D1	D2	D3
10	200	170	85	60	80	50	50	60	50	7	26	18	M16
20-30	300	240	110	60	120	70	70	120	115	28	43	26	M24
40-50	300	240	110	60	150	70	80	120	115	30.5	43	26	M24

Color Codes

Function	Colors
+ excitation	blue
- excitation	black
+ signal	white
- signal	red
shield	yellow

(Specifications are subject to change without notice. 02 -03 / 2024)