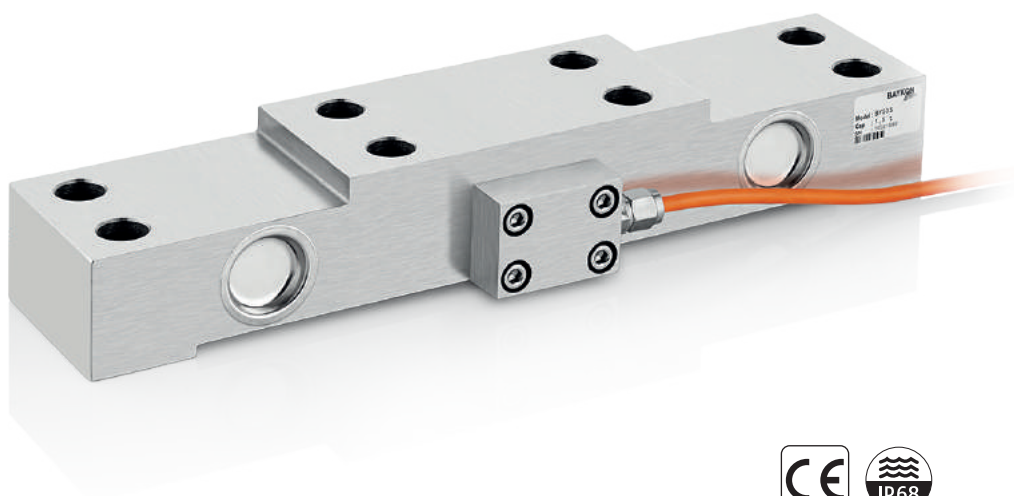
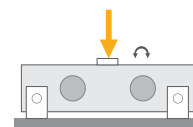


BY535

Double Ended Shear Beam Load Cell



Applications



Crane Scales



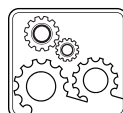
Tank, Bunker, Silo Weighing



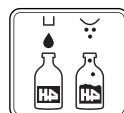
High Capacity Applications



Special Weighing



Industrial Processes



Packing & Filling Applications

Key Features

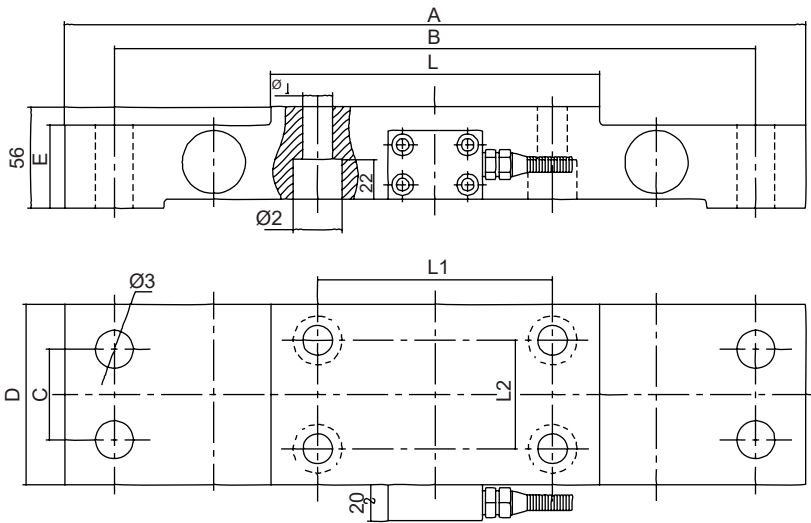
- Capacities: 1.5~10 t
- Nickel plated alloy steel
- Protection class: IP68
- High accuracy

Type BY535 is a special type, alloy steel construction double ended shear beam loadcell and has been specifically designed for the high fatigue stresses, on board weighing, ship weighing, etc. applications.

Technical Specifications

Model		BY535
Capacity (E_{max})	t	1.5 / 2.5 / 4 / 5 / 7.5 / 10
Rated output (RO)	mV / V	1.2 ± 0.002
Combined error	%RO	≤ 0.2
Temperature effect on zero	%RO / 10°C	≤ 0.03
Temperature effect on sensitivity	%RO / 10°C	≤ 0.1
Safe load limit	% E_{max}	150
Ultimate load	% E_{max}	200
Zero balance	%RO	≤ 1
Creep error (30 min.)	%RO	≤ 0.05
Excitation, recommended	V (DC)	5 - 12
Excitation maximum	V (DC)	15
Input resistance	Ω	750 ± 10
Output resistance	Ω	702 ± 3
Insulation resistance (at 50 V DC)	M Ω	≥ 5000
Compensated temperature range	°C	- 10...+ 40
Operating temperature range	°C	- 30...+ 70
Material		Nickel plated alloy steel
Protection class		IP68
Cable		Length: 2 m / diameter: 6 mm

Dimensions (mm)



Cap. (t)	1.5t	2.5t	4~10t
A	350	410	410
B	310	355	355
C	38	50	50
D	75	100	100
E	46	44.5	46
L	151	181	211
L1	100	130	160
L2	40	60	60
Ø1	Ø17.5	Ø17.5	Ø17
Ø2	Ø28	Ø28	Ø27
Ø3	Ø18	Ø22	Ø21.5

Color Codes

Function	Colors
+ input	blue
+ output	white
- input	black
- output	red
Shield	yellow