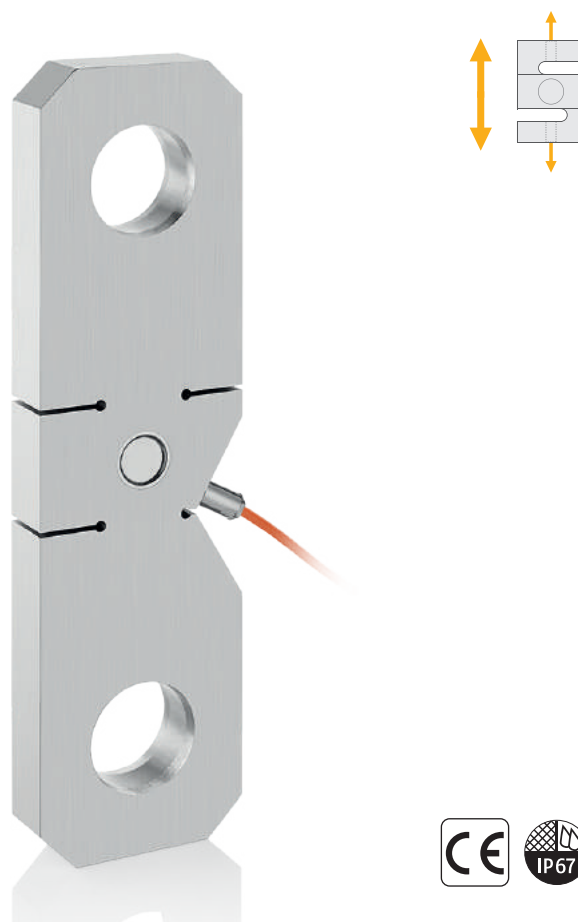


# BY404

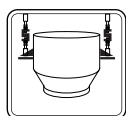
## Tension - S Type Load Cell



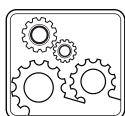
### Applications



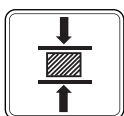
Crane Scales



Suspended Vessel



Industrial Processes



Testing Machines



Packing & Filling Applications

### Key Features

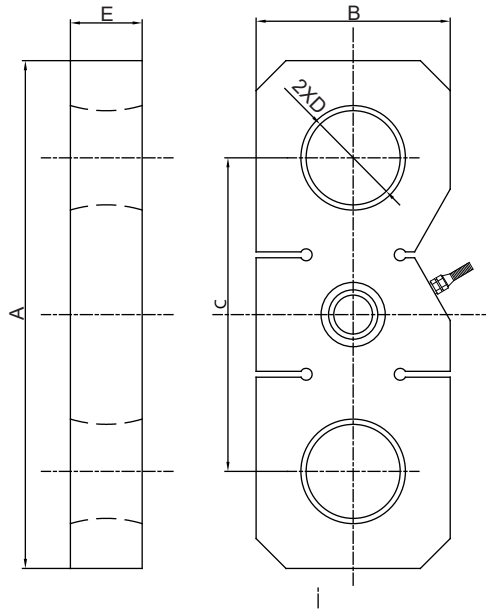
- Capacities: 15~150 t
- Nickel plated alloy steel
- Protection class: IP67
- High capacity tension weighing applications

BY404 is steel S type load cell alloy steel IP67 protected load cell. It perfectly fits for use in industrial applications such as high capacity crane scales and testing equipment.

# Technical Specifications

Model		BY404	
Capacity ( $E_{max}$ )	t	15 / 20 / 30 / 50	100 / 150
Rated output (RO)	mV / V	$2.0 \pm 0.002$	$1.5 \pm 0.01$
Combined error	%RO	$\leq 0.05$	
Temperature effect on zero	%RO / $10^{\circ}\text{C}$	$\leq 0.02$	
Safe load limit	%RO / $10^{\circ}\text{C}$	$\leq 0.02$	
Ultimate load	% $E_{max}$	120	
Zero balance	%RO	$\leq 1$	
Creep error (30 min.)	%RO	$\leq 0.02$	
Excitation, recommended	V (DC)	5 - 12	
Excitation maximum	V (DC)	15	
Input resistance	$\Omega$	$400 \pm 20$	
Output resistance	$\Omega$	$352 \pm 3$	
Insulation resistance (at 50 V DC)	M $\Omega$	$\geq 5000$	
Compensated temperature range	$^{\circ}\text{C}$	- 10...+ 40	
Operating temperature range	$^{\circ}\text{C}$	- 30...+ 70	
Material		Nickel plated alloy steel	
Protection class		IP67	
Cable		Length: 12 m / diameter: 6 mm	

## Dimensions (mm)



Capacity	A	B	C	D	E
15 - 30 t	340	130	210	$\emptyset 63$	48
50 t	620	171	438	$\emptyset 85.5$	47
100-150 t	500	190	305	$\emptyset 97$	130

## Color Codes

Function	Colors
+ excitation	red
+ signal	green
- excitation	black
- signal	white
shield	

Specifications are subject to change without notice. 02 -03 / 2024