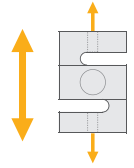


BT610 / BT610S

Tension - S Type Load Cell



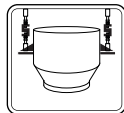
Applications



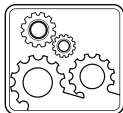
Explosive Atmospheres



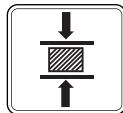
Crane Scales



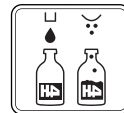
Suspended Vessel



Industrial Processes



Testing Machines



Packing & Filling Applications

Key Features

- Capacities: 100 kg~5000 kg
- BT610 Nickel plated alloy steel
- BT610S Stainless steel
- ATEX approved (optional)
Zone 0, 1, 2, 20, 21, 22
- Protection class: IP66 / IP68
- Tension and compression type usage

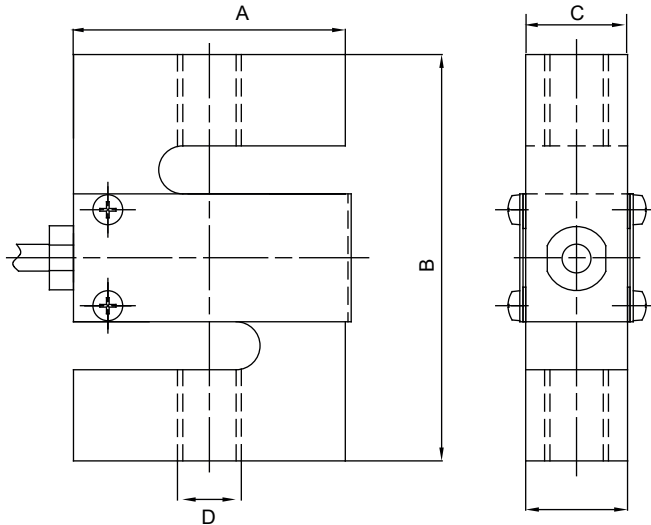
BT610 alloy steel / BT610S is stainless steel S type loadcell with IP66 / IP68 protected. It perfectly fits for use in industrial applications such as crane scales, suspended hopper scales, conversion of mechanical scales and testing equipment.

ATEX approved BT610 / BT610S load cells are suitable for use in explosive environments.

Technical Specifications

Model		BT610	BT610S
Capacity (E _{max})	kg	100 / 250 / 500 / 750 / 1000 / 1500 / 2000 / 3000 / 5000	
Accuracy class		0.03	
Rated output (RO)	mV / V	2.0 ± 0.003	
Non-Linearity	%RO	≤ 0.03	
Hysteresis error	%RO	≤ 0.03	
Non-Repeatability	%RO	≤ 0.02	
Temperature effect on zero	%RO / 10°C	≤ 0.02	
Temperature effect on sensitivity	%RO / 10°C	≤ 0.02	
Safe load limit	%E _{max}	120	
Ultimate load	%E _{max}	200	
Creep error (30 min.)	%RO	≤ 0.03	
Excitation voltage, maximum	V (DC)	15	
Input resistance	Ω	400 ± 20	
Output resistance	Ω	352 ± 5	
Insulation resistance (at 50 V DC)	MΩ	≥ 5000	
Compensated temperature range	°C	- 10...+ 40	
Operating temperature range	°C	- 30...+ 70	
ATEX Approval (Optional)		ATEX  II 1G Ex ia IIC T6 Ga II 1D Ex ia IIIC T82°C Da	
Material		Nickel plated alloy steel	Stainless steel
Protection class		IP66	IP68
Cable		Length: 5 m / diameter: 5 mm	

Dimensions (mm)



Capacity	A	B	C	D
100~750 kg	51	76.2	19.1	M12
1 t	51	76.2	25.4	M12
1.5 ~ 5 t	76.2	100.4	31.8	M20x1.5

Color Codes

Function	Colors
+ excitation	blue
- excitation	black
+ signal	white
- signal	red
shield	

W Modules



LA54