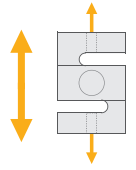


BT604

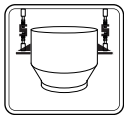
Tension - S Type Load Cell



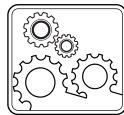
Applications



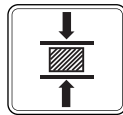
Crane Scales



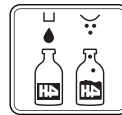
Suspended Vessel



Industrial Processes



Testing Machines



Packing & Filling Applications

Key Features

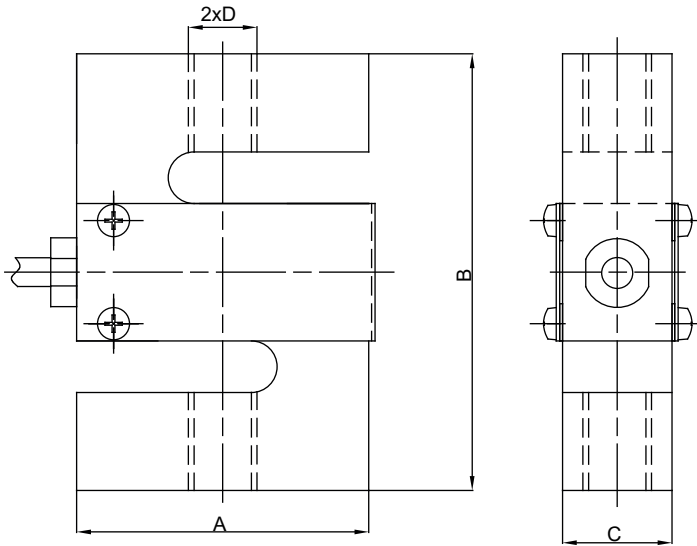
- Capacities: 25 kg ~ 5000 kg
- Nickel plated alloy steel
- Protection class: IP67
- High accuracy

BT604 is nickel plated alloy steel S type load cell. It perfectly fits for use in industrial weighing applications such as crane scales, suspended hopper scales, conversion of mechanical scales and test machines.

Technical Specifications

Model		BT604
Capacity (E _{max})	kg	25 / 50 / 100 / 200 / 250 / 500 / 750 / 1000 / 1500 / 2000 / 3000 / 5000
Accuracy class		G3
Rated output (RO)	mV / V	2.0 ± 0.004
Combined error	%RO	≤ 0.020
Safe load limit	%E _{max}	150
Ultimate load	%E _{max}	300
Zero balance	%RO	≤ 1.5
Excitation voltage, recommended	V (DC)	5 - 12
Excitation voltage, maximum	V (DC)	18
Input resistance	Ω	350 ± 3.5
Output resistance	Ω	351 ± 2.0
Insulation resistance (at 50 V DC)	MΩ	≥5000
Compensated temperature range	°C	- 10...+ 40
Operating temperature range	°C	- 35...+ 65
Material		Nickel plated alloy steel
Protection class		IP67
Cable		Length: 3 meter (up to 1.5 t), 6 meter (2 t / 5 t) Diameter: 5 mm

Dimensions (mm)



Capacity(mm)	A	B	C	D
25 - 50 kg	50.8	76.2	12.7	M8
100 kg	50.8	76.2	19	M10 x 1.5
200 - 750 kg	50.8	76.2	19	M12 x 1.75
1 - 1.5 t	50.8	76.2	25.4	M12 x 1.75
2 - 5 t	76.2	101.6	25.4	M20 x 1.5

Color Codes

Function	Colors
+ input	red
+ output	green
- input	black
- output	white

W Modules



LA54