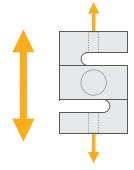


# BT602

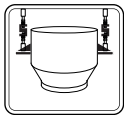
## Tension - S Type Load Cell



### Applications



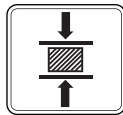
Crane Scales



Suspended Vessel



Industrial Processes



Testing Machines



Packing & Filling Applications

### Key Features

- Capacities; 20 ~ 50
- Nickel plated alloy steel
- Protection class: IP65
- High accuracy

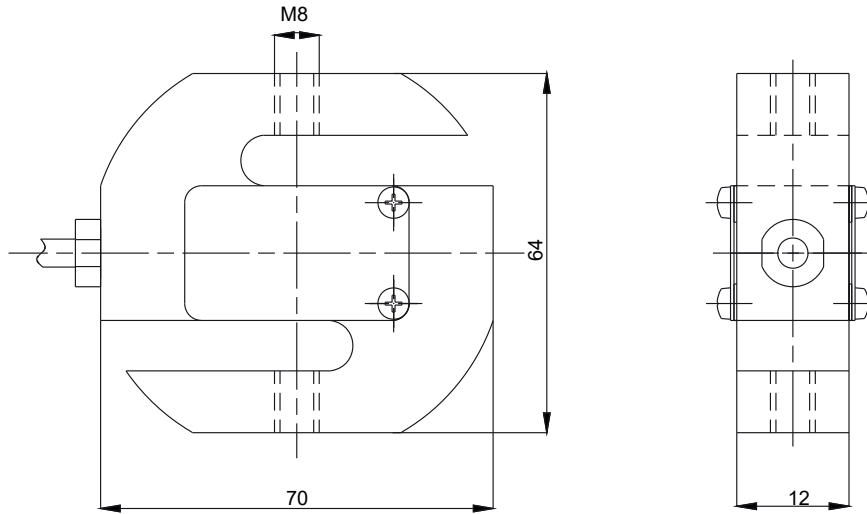
BAYKON BT602 is low-cost and high performance tension type load cell. They are manufactured from high durability alloy steel construction.

BT602 series load cells perfectly fit for use in low capacities weighing applications, suspended hopper weighing and general test or force measurement.

# Technical Specifications

Model		BT602
Capacity ( $E_{max}$ )	kg	20 / 30 / 50
Rated output (RO)	mV / V	$2.0 \pm 0.003$
Combined Error	%RO	$\leq 0.03$
Non-Linearity	%RO	$\leq 0.03$
Temperature effect on zero	%RO / 10°C	$\leq 0.2$
Temperature effect on sensitivity	%RO / 10°C	$\leq 0.2$
Safe load limit	% $E_{max}$	120
Ultimate load	% $E_{max}$	150
Zero balance	%RO	$\leq 1$
Creep error (30 min.)	%RO	$\leq 0.2$
Excitation voltage, recommended	V (DC)	5 - 12
Excitation voltage, maximum	V (DC)	15
Input resistance	$\Omega$	$400 \pm 20$
Output resistance	$\Omega$	$352 \pm 5$
Insulation resistance (at 50 V DC)	M $\Omega$	$\geq 5000$
Compensated temperature range	°C	- 10...+ 40
Operating temperature range	°C	- 35...+ 65
Malzeme		Nickel plated alloy steel
Protection		IP65
Cable		Length: 3 m

## Dimensions (mm)



## Color Codes

Function	Colors
+ excitation	blue
- excitation	black
+ signal	white
- signal	red
shield	

(Specifications are subject to change without notice. 03 -03 / 2024)