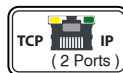


CSH Crane Scale

Creative, versatile, and suitable for automation



System integration

- Options for transferring weight data to any PC & PLC
- Ability to receive an audible signal warning at the limit value (Option)



Remote control

- Thanks to the ergonomic keypad, operations such as weighing, zeroing, turning on and off can be performed effortlessly.
- Compatibility with different types of ring and hook connections



WiFi connection

- Weighing data can be transferred via Wi-Fi to a local network or a mobile device (tablet, smartphone, etc.) (Optional)



BAYKON CSH Crane Scale is a versatile and economical electronic weighing device suitable for use in cranes, traveling bridge cranes, or similar lifting systems. It is available in two variants with capacities of 10 and 20 tons.

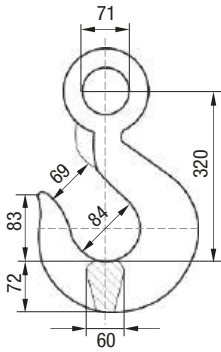
The CSH crane scale consists of a Beam Type (double-ended) load cell, a BX11 electronic indicator for weight measurement, a ring for connecting to the crane hook, and a hook for lifting the load. The indicator is controlled via buttons on the unit or an infrared remote control. Optionally, the weighing result can be monitored via Bluetooth on an external display, an audible warning can be received when a load is lifted at a pre-set weight, and weighing data can be transferred via WiFi to a local network or a mobile device (tablet, smartphone, etc.).

With these features, the CSH crane scale is a practical, versatile, and economical solution for weighing applications in cranes or mobile cranes in various industries, particularly in the logistics sector.

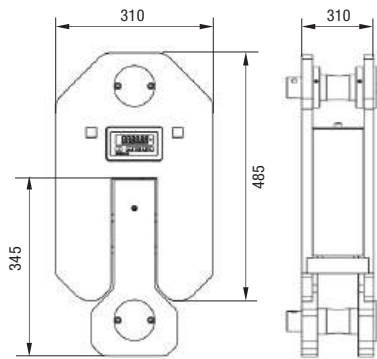
Technical Specifications

Model	CSH	
Weighing Capacity (kg)	10000	20000
Accuracy (kg)	5	10
Display	6-digit LED display with a height of 13.5 mm	
Tare Area	Entire weighing area	
Fixing time	< 10 sec.	
Measurement limit (kg)	10000	20000
Maximum safe load (kg)	10000	20000
Breakdown limit	10000	20000
Operating time	60 ~ 90 hours	
Rechargeable battery type	Fully sealed type, Li-Ion battery, 11.1V/7Ah	
Battery charger	DC 12,6V / 1000mA	
Operating temperature	-10°C ... 40°C [15°F ... +105°F]	
Humidity	< 85% RH	
Remote control battery	(AA) type, 1.5V x 2	

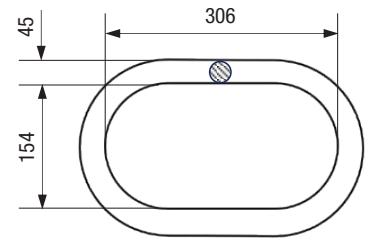
Dimensions (mm)



GM-320 Hook



CSH Crane Scale



GM-340 Ring (Grade 80)

* Different hook and ring sizes can be attached according to demand.

General Features

- Capacity: 10,000 kg d: 2 kg Min: 40 kg Battery-powered operation time up to 90 hours
- The body's durability has been tested up to 130 tons
- Battery warning LED indicating when battery replacement is needed
- High-precision A/D converter: 24-bit Delta-Sigma, ratio metric, with internal analog and digital filters
- Automatic zero tracking and automatic zeroing at startup
- Adaptive digital filter for fast and stable reading
- Calibration without test weights (ecal)
- Zero calibration setting
- Gain calibration setting



(Specifications are subject to change without notice. 01 - 01 / 2026)