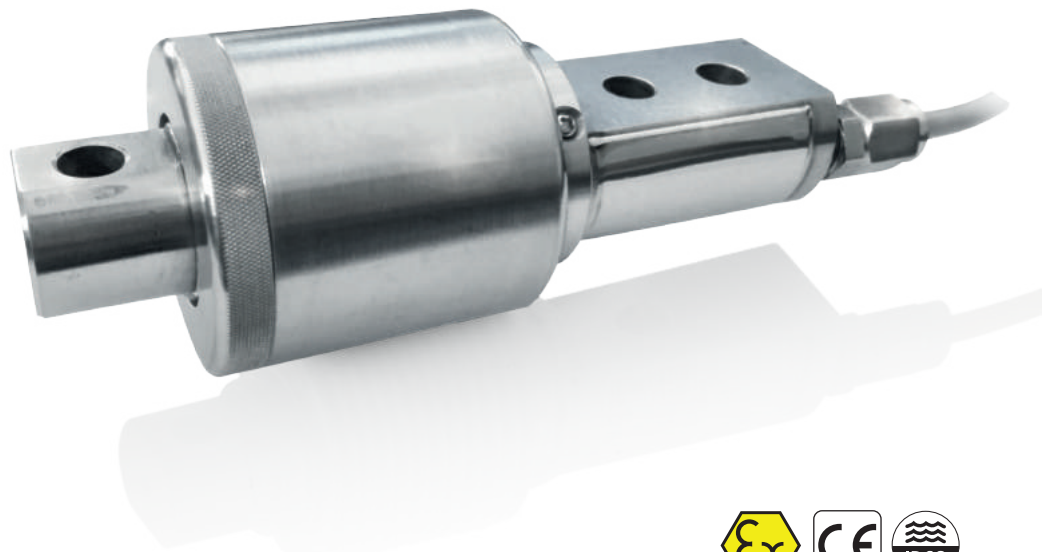
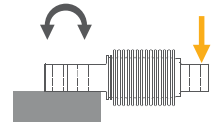


BS556 / BS556S

Bending Beam Load Cell



Applications



Floor Scales



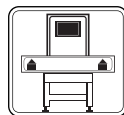
Water Proof Scales



Explosive Atmospheres



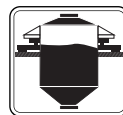
Pallet Scales



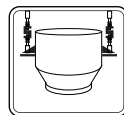
Checkweighers



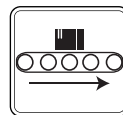
Mobile Applications



Tank, Bunker, Silo Weighing



Suspended Vessel



Conveyor Scales



Packing & Filling Applications

Key Features


- 5~500 kg Capacities
- BS556 Nickel plated alloy steel with stainless steel bellow
- BS556S All stainless-steel construction
- ATEX approved (optional)
Zone 0, 1, 2, 20, 21, 22
- Protection class: IP68

BS556 and BS556S load cells are made of nickel-plated alloy steel and stainless steel, respectively. Both load cells have stainless steel bellows and IP68 protection class. Especially in dusty environments, to prevent the dust accumulation between the bellows and to maintain weighing accuracy, the bellows of these load cells are protected by a stainless steel sheath.

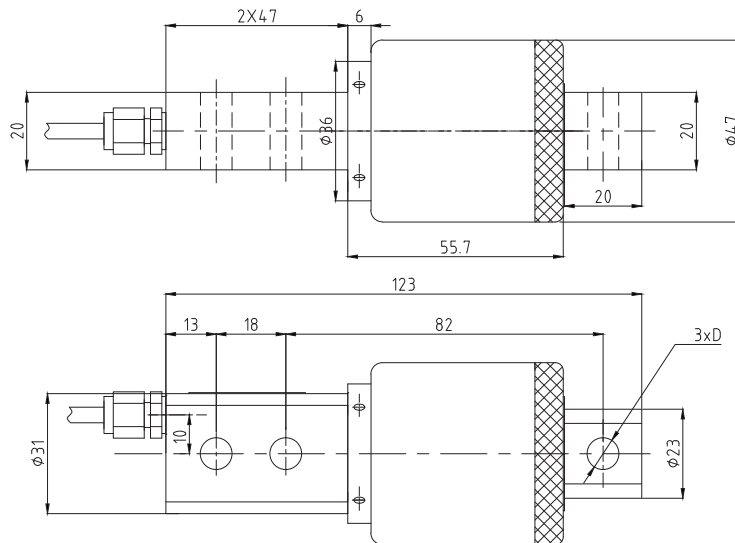
BS556 and BS556S load cells have an integrated overload protection mechanism against impacts.

ATEX approved BS556 / BS556S load cells are suitable for use in explosive environments.

Technical Specifications

Model		BS556	BS556S
Maximum capacity (E _{max})	kg	10 / 20 / 30 / 40 / 50 / 75 / 100 / 150 / 200 / 250 / 300 / 500	
Accuracy class		G3	
Maximum division number (d)		3000	
Rated output (RO)	mV / V	2.0 ± 0.002	
Combined error	%RO	≤ 0.03	
Creep error (30 minutes)	%RO	≤ 0.02	
Temperature effect on zero	%RO / 10°C	≤ 0.02	
Temperature effect on sensitivity	%RO / 10°C	≤ 0.02	
Zero balance	%RO	≤ 1	
Input resistance	Ω	400 ± 20	
Output resistance	Ω	352 ± 3	
Insulation resistance (at 50 V DC)	MΩ	≥ 5000	
Safe load limit	%E _{max}	150	
Ultimate load	%E _{max}	300	
Excitation voltage, recommended	V (DC)	10 - 12	
Excitation voltage, maximum	V (DC)	15	
Compensated temperature range	°C	- 10... + 40	
Operating temperature range	°C	- 30...+ 70	
ATEX Approval (Optional)		ATEX  II 1G Ex ia IIC T6 Ga II 1D Ex ia IIIC T82°C Da	
Material		Nickel plated alloy steel	Stainless steel
Protection class		IP68	
Cable		Length : 5 m / diameter: 5 mm	

Dimensions (mm)

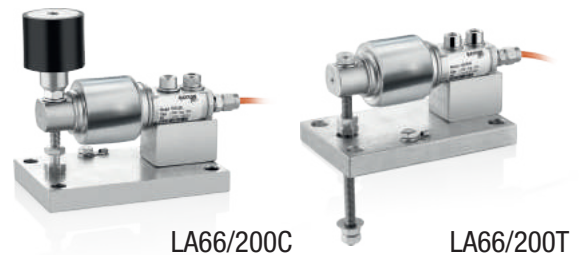


Capacity	D
≤ 250	ø 8.2
> 250	ø 10.2

Color Codes

Function	Colors
+ input	blue
+ output	white
- input	black
- output	red
shield	yellow

W Modules



LA66/200C

LA66/200T