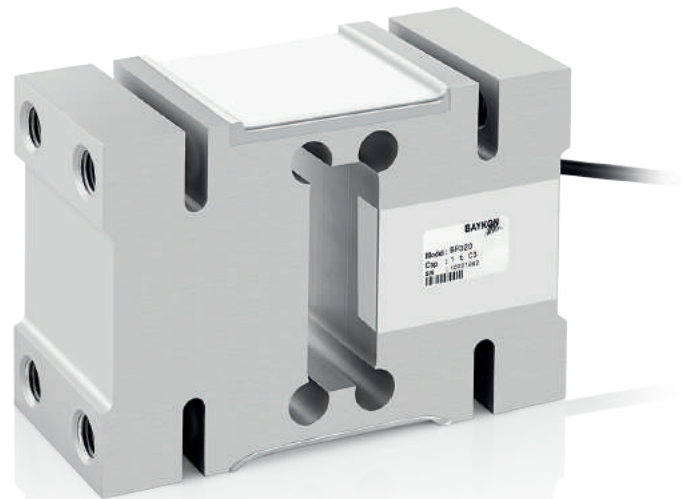
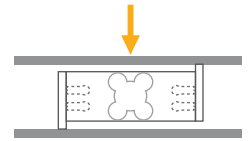


# BP320

## Single Point Load Cell



### Applications



Small Bench



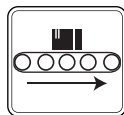
Large Bench



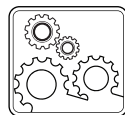
Checkweighers



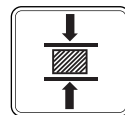
Tank, Bunker,  
Silo Weighing



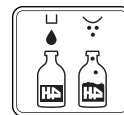
Conveyor  
Scales



Industrial  
Processes



Testing  
Machines



Packing & Filling  
Applications

### Key Features

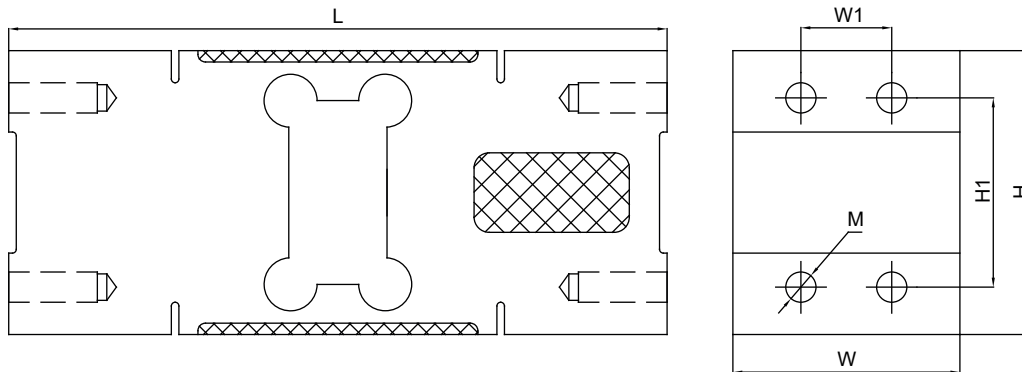
- Capacities: 50~2000 kg
- EU OIML R60 C3
- Aluminum
- Protection class: IP66
- 50 - 200 kg: 600 x 600 platform size (recommended)
- 200 - 500 kg: 600 x 800 mm platform
- 750 -2000 kg: 1200 x 1200 mm platform

BP320 is EU OIML R60 C3 approved aluminium-alloy construction and adhesive sealed single point type load cell with IP66 protection. It is suitable for floor scales, counting scales, packing machines and similar electronic weighing devices or testing machines.

# Technical Specifications

Model		BP320		
Capacity ( $E_{max}$ )	kg	50 / 100 / 150 / 200 / 250 / 500 / 750 / 1000		2000
Accuracy class according to OIML R60		C3		
Rated output (RO)	mV / V	2.0 ± 0.2		
Maxi. number of load cell verification intervals ( $n_{LC}$ )		3000		
Min. load cell verification interval ( $v_{min}$ )		$E_{max} / 7000$		$E_{max} / 6600$
Combined error	%RO	≤ 0.017		
Minimum dead load	% $E_{max}$	0		
Safe load limit	% $E_{max}$	150		
Ultimate load	% $E_{max}$	300		
Zero balance	%RO	≤ 2.0		
Excitation voltage, recommended	V (DC)	5-12		
Excitation voltage, maximum	V (DC)	18		
Input resistance	Ω	409± 6		
Output resistance	Ω	350 ± 3		
Insulation resistance (at 50 V DC)	MΩ	> 5000		
Compensated temperature range	°C	- 10...+ 40		
Operating temperature range	°C	- 35...+ 65		
Material		Aluminium		
Protection class		IP66		
Cable		Shielded, 6 conductor cable, length: 3 m / diameter: 6.2 mm		
Maximum platform size	mm	50-200 kg: 600 x 600	200-500 kg: 600 x 800	750 kg-2000 kg: 1200 x 1200

## Dimensions (mm)



Capacity	H	H1	L	W	W1	M
50 - 200 kg	75	50	156	44	24	M12
250 - 500 kg 750 kg - W1	95	70	146	60	36	M12
750 - 2000 kg	125	95	176	76	46	M16

## Color Codes

Function	Colors
+ excitation	red
- excitation	black
+ sense	brown
- sense	yellow
+ signal	blue
- signal	white
shield	