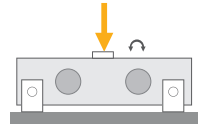


BD420 / BD420S

Double Ended Beam Load Cells



Applications



Crane Scales



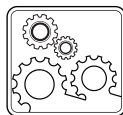
Tank, Bunker,
Silo Weighing



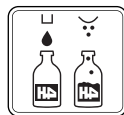
High Capacity
Applications



Special
Weighing



Industrial
Processes



Packing & Filling
Applications

Key Features

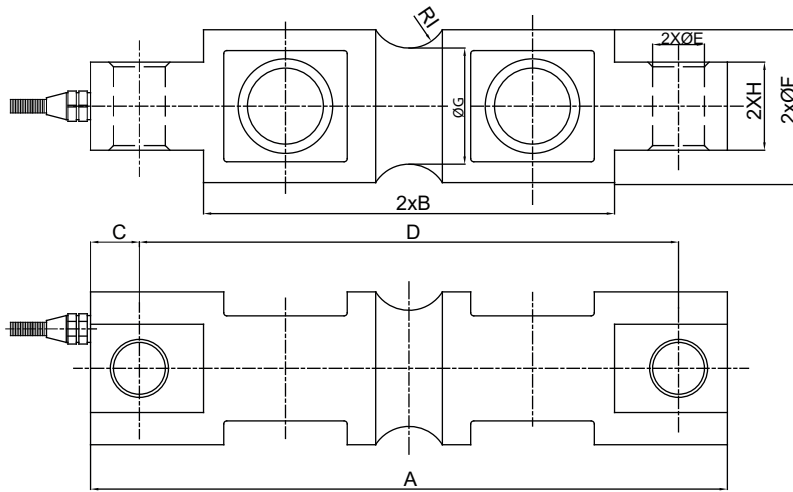
- Capacities: 50 ~ 100 klbs
- BD420 Nickel plated alloy steel
- BD420S Stainless steel
- Protection class: IP68
- High accuracy

BD420 / BD420S is nickel plated alloy steel or stainless steel double ended shear beam type load cell designed for high capacity silo and tank weighing applications. Its welded construction provides IP68 environmental protection.

Technical Specifications

| | | |
|------------------------------------|-------------------|--|
| Model | | BD420 / BD420S |
| Capacity (E _{max}) | klb | 50 / 70 / 100 |
| Accuracy class | % | 0.05 |
| Rated output (RO) | mV / V | 3.0 ± 0.003 |
| Non-Linearity | %RO | ≤ 0.05 |
| Non-Repeatability | %RO | ≤ 0.02 |
| Temperature effect on zero | %RO / 10°C | ≤ 0.02 |
| Temperature effect on sensitivity | %RO / 10°C | ≤ 0.02 |
| Safe load limit | %E _{max} | 150 |
| Ultimate load | %E _{max} | 250 |
| Zero balance | %RO | ≤ 1 |
| Creep error (30 min.) | %RO | ≤ 0.02 |
| Excitation voltage, recommended | V (DC) | 5 - 12 |
| Excitation voltage, maximum | V (DC) | 15 |
| Input resistance | Ω | 750 ± 10 |
| Output resistance | Ω | 702 ± 5 |
| Insulation resistance (at 50 V DC) | MΩ | ≥ 5000 |
| Compensated temperature range | °C | - 10...+ 40 |
| Operating temperature range | °C | - 30...+ 70 |
| Material | | BD420 nickel plated alloy steel / BD420S stainless steel |
| Protection class | | IP68 |
| Cable | | Length: 10 m / diameter: 6 mm |

Dimensions (mm)

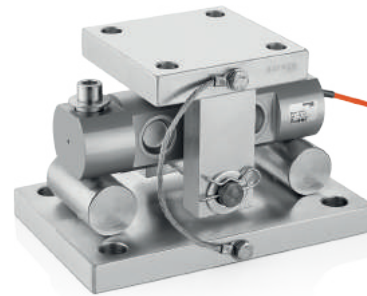


| Capacity (mm) | 70 | 100 |
|---------------|------|-------|
| A | 260 | 285.8 |
| B | 164 | 190 |
| C | 22 | 22.25 |
| D | 216 | 241.3 |
| E | 27 | 27 |
| F | 76 | 88.9 |
| G | 69.3 | 82.3 |
| H | 60 | 63.5 |
| I | 25.4 | 38.1 |

Color Codes

| Function | Colors |
|----------|--------|
| + input | blue |
| + output | white |
| - input | black |
| - output | red |
| shield | yellow |

W Modules



LAD420