

# BX61 Weighing Terminal

User programmable for transactional applications



## Applications

- Smart barcode labelling
- Data collection as text file Export and SQL level
- SQC-Net weight control
- Checkweighing
- Counting systems
- Formulation & batching



## Peripherals

- Up to 2 platforms
- Precision balance
- Barcode scanner
- Proximity card reader
- Receipt printer
- Barcode label printer
- PC keypad & mouse



## Interface

- Infrared sensors as Print & Tare functions (only desk top model)
- Ethernet
- 2 x RS-232, 2 x USB 1 x Wi-Fi
- Digital 4in/4out



BAYKON BX61 is programmable terminal designed for industrial weighing applications; counting, checkweighing, SQC terminal for net weight control of prepacked products, vibrating batchers.

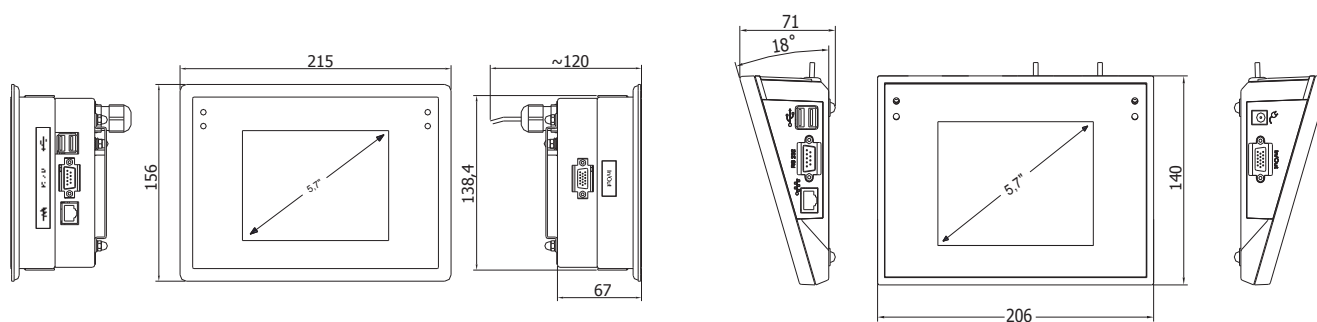
It is available as desktop plastic housing and panel type with stainless steel, IP65 front panel. It is equipped with a 5.7" colour graphic display with touch panel and membrane keypad.

BX61 terminal offers simultaneous operation up to 2 weighing platforms and precision balances, barcode scanners, magnetic card readers, receipt and label printers, external PC keypad and mouse, external buttons, relays and PLCs over parallel I/Os.

BX61 offers perfect data integration features; data export as text file, SQL level transfer and carrying data via USB flash.

# BX61 Specifications

<b>Accuracy</b>	
Accuracy class	OIML Class III
EU Type approval	6.000 intervals
<b>Display and Keyboard</b>	
Display	5.7" with touch panel
Keyboard	8-key membrane
Infrared sensors	2 ( for BX61 desk type )
<b>A/D Converter</b>	
Analog input range	0 - 19.5 mV
Max. voltage per verification interval	3.25 $\mu$ V
Min. voltage per verification interval	0.4 $\mu$ V
<b>System</b>	
Processor	Quad-core 64-bit Cortex-A53 1,2 GHz
Ram	RAM 1GB LPDDR2
Memory	16 GB ( micro SD )
<b>Scale Functions and Calibration</b>	
Multi range	One, two or three range
Zero	Zero indication Initial zero setting $\leq 20$ % Max Zero tracking $\leq 4$ % Max Automatic or semi-automatic zero setting
Tare	Automatic or semi-automatic tare balancing ( Subtractive )
Calibration	Calibration and set-up mode via switch on the main board, gravity factor setup
<b>Connections</b>	
Connectable platforms	2 ( for BX61 desk/wall type and panel type )
Load cell Excitation	5 VDC, max. 100 mA
Minimum load cell impedance	50 $\Omega$
Maximum load cell impedance	1200 $\Omega$
Cable connection	4 or 6 wire + shield
Interface	2 x RS 232, 2 x USB, 1 x Ethernet, 1 x Wi-Fi
Digital input / Outputs	4in / 4out
<b>Environment and Enclosure</b>	
Operation temperature	-10 °C to +40°C
Humidity	85% RH max, non-condensing.
Housing and IP protection	ABS plastic standard version - IP43, Panel version- IP66 / 67
<b>Power Supply</b>	
Power Supply	10-28 VDC
Max. Power consumption	10 W
<b>Dimensions &amp; Weight</b>	
Overall dimensions	206 x 140 x 71 mm
Net weight	0.8 kg
Gross weight	1.2 kg
Packaging dimensions	300 x 250 x 130 mm



Specifications are subject to change without notice. 03-12 / 2020